



MMP-23 Polyclonal Antibody

Catalog No	YP-Ab-02683
Isotype	IgG
Reactivity	Human;Mouse;Rat
Applications	WB;ELISA;IHC
Gene Name	MMP23A
Protein Name	Matrix metalloproteinase-23
Immunogen	The antiserum was produced against synthesized peptide derived from human MMP-23. AA range:341-390
Specificity	MMP-23 Polyclonal Antibody detects endogenous levels of MMP-23 protein.
Formulation	Liquid in PBS containing 50% glycerol, 0.5% BSA and 0.02% sodium azide.
Source	Polyclonal, Rabbit,IgG
Purification	The antibody was affinity-purified from rabbit antiserum by affinity-chromatography using epitope-specific immunogen.
Dilution	WB 1:500-2000;IHC-p 1:50-300; ELISA 2000-20000
Concentration	1 mg/ml
Purity	≥90%
Storage Stability	-20°C/1 year
Synonyms	MMP23A; MMP21; MMP23B; MMP21; MMP22; Matrix metalloproteinase-23; MMP-23; Femalysin; MIFR-1; Matrix metalloproteinase-21; MMP-21; Matrix metalloproteinase-22; MMP-22
Observed Band	44kD
Cell Pathway	Endoplasmic reticulum membrane ; Single-pass type II membrane protein . Membrane ; Single-pass type II membrane protein . A secreted form produced by proteolytic cleavage may also exist. .
Tissue Specificity	Predominantly expressed in ovary, testis and prostate.
Function	cofactor: Binds 1 zinc ion per subunit.,enzyme regulation: Inhibited by TIMP2.,function: Protease.,PTM: N-glycosylated.,PTM: Proteolytic cleavage might yield an active form.,similarity: Belongs to the peptidase M10A family.,similarity: Contains 1 Ig-like C2-type (immunoglobulin-like) domain.,subcellular location: A secreted form produced by proteolytic cleavage seems also to exist.,tissue specificity: Predominantly expressed in ovary, testis and prostate.,
Background	This gene (MMP23B) encodes a member of the matrix metalloproteinase (MMP) family, and it is part of a duplicated region of chromosome 1p36.3. Proteins of the matrix metalloproteinase (MMP) family are involved in the breakdown of extracellular matrix in normal physiological processes, such as embryonic



development, reproduction, and tissue remodeling, as well as in disease processes, such as arthritis and metastasis. This gene belongs to the more telomeric copy of the duplicated region. [provided by RefSeq, Jul 2008],

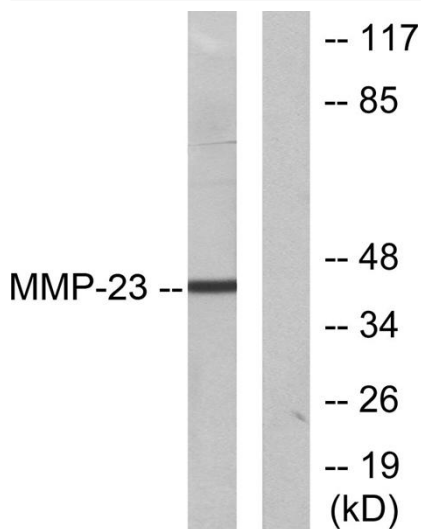
matters needing attention

Avoid repeated freezing and thawing!

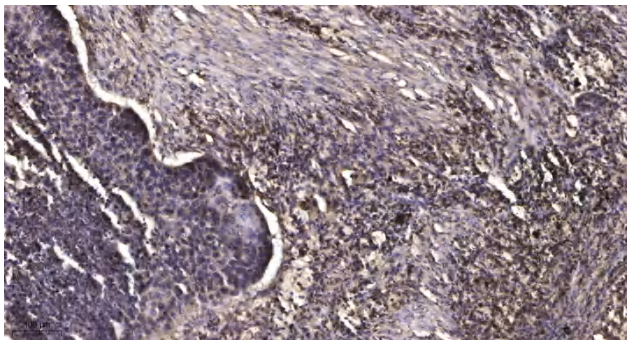
Usage suggestions

This product can be used in immunological reaction related experiments. For more information, please consult technical personnel.

Products Images



Western blot analysis of lysates from SKOV3 cells, using MMP-23 Antibody. The lane on the right is blocked with the synthesized peptide.



Immunohistochemical analysis of paraffin-embedded human Squamous cell carcinoma of lung. 1, Antibody was diluted at 1:200(4° overnight). 2, Tris-EDTA,pH9.0 was used for antigen retrieval. 3,Secondary antibody was diluted at 1:200(room temperature, 45min).